

RXFP4 Polyclonal Antibody

Catalog No. E-AB-52124

Note: Centrifuge before opening to ensure complete recovery of vial contents.

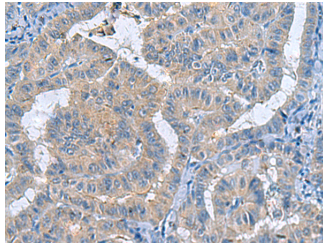
Description

Reactivity	Human
Immunogen	Synthetic peptide of human RXFP4
Host	Rabbit
Isotype	IgG
Purification	Antigen affinity purification
Conjugation	Unconjugated
Buffer	PBS with 0.05% NaN ₃ and 40% Glycerol, pH7.4

Applications Recommended Dilution

IHC 1:50-1:100,
ELISA
1:5000-1:10000

Data



Immunohistochemistry of paraffin-embedded Human thyroid cancer tissue using RXFP4 Polyclonal Antibody at dilution of 1:40(×200)

Preparation & Storage

Storage Store at -20°C. Avoid freeze / thaw cycles.

Background

GPR100 is a member of the rhodopsin family of G protein-coupled receptors (GPRs).

For Research Use Only