

Phospho-PRKD1 (Ser910) Polyclonal Antibody

Catalog No. E-AB-21024

Note: Centrifuge before opening to ensure complete recovery of vial contents.

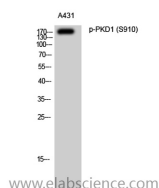
Description

Reactivity	Human, Mouse, Rat
Immunogen	Synthesized peptide derived from human PKD1 around the phosphorylation site of S910.
Host	Rabbit
Isotype	IgG
Purification	Affinity purification
Buffer	PBS with 0.02% sodium azide, 0.5% protective protein and 50% glycerol, pH7.4

Applications Recommended Dilution

WB	1:500-1:2000
ELISA	1:10000

Data



Western Blot analysis of A431 cells with Phospho-PRKD1 (Ser910) Polyclonal Antibody

Observed Mw:117kDa
Calculated Mw:102kDa

Preparation & Storage

Storage Store at -20°C. Avoid freeze / thaw cycles.

Background

Converts transient diacylglycerol (DAG) signals into prolonged physiological effects, downstream of PKC. Involved in resistance to oxidative stress through activation of NF-kappa-B.

For Research Use Only