

# NCR1 Polyclonal Antibody

Catalog Number:E-AB-52126



**Note:** Centrifuge before opening to ensure complete recovery of vial contents.

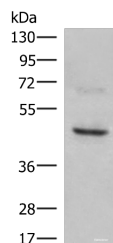
## Description

|                     |                                                        |
|---------------------|--------------------------------------------------------|
| <b>Reactivity</b>   | Human                                                  |
| <b>Immunogen</b>    | Synthetic peptide of human NCR1                        |
| <b>Host</b>         | Rabbit                                                 |
| <b>Isotype</b>      | IgG                                                    |
| <b>Purification</b> | Antigen affinity purification                          |
| <b>Conjugation</b>  | Unconjugated                                           |
| <b>Formulation</b>  | PBS with 0.05% NaN <sub>3</sub> and 40% Glycerol,pH7.4 |

## Applications Recommended Dilution

|              |                |
|--------------|----------------|
| <b>WB</b>    | 1:500-1:2000   |
| <b>ELISA</b> | 1:5000-1:10000 |

## Data



Western blot analysis of SKOV3 cell lysate using  
NCR1 Polyclonal Antibody at dilution of 1:350

**Observed Mw:Refer to figures**

**Calculated Mw:34 kDa**

## Preparation & Storage

**Storage** Store at -20°C. Avoid freeze / thaw cycles.

## Background

Natural cytotoxicity triggering receptor 1 is a protein that in humans is encoded by the NCR1 gene. NCR1 has also been designated as CD335 (cluster of differentiation 335). Cytotoxicity-activating receptor that may contribute to the increased efficiency of activated natural killer (NK) cells to mediate tumor cell lysis. Interacts with CD247 and FCER1G. Selectively expressed by both resting and activated NK cells.

## For Research Use Only

A Reliable Research Partner in Life Science and Medicine

Toll-free: 1-888-852-8623

Web: [www.elabscience.com](http://www.elabscience.com)

Tel: 1-832-243-6086

Email: [techsupport@elabscience.com](mailto:techsupport@elabscience.com)

Fax: 1-832-243-6017