

Phospho-HBP1 (Ser402) Polyclonal Antibody

Catalog No. E-AB-21043

Note: Centrifuge before opening to ensure complete recovery of vial contents.

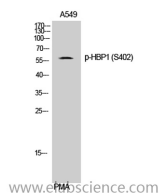
Description

Reactivity	Human
Immunogen	Synthesized peptide derived from human HBP1 around the phosphorylation site of S402.
Host	Rabbit
Isotype	IgG
Purification	Affinity purification
Buffer	PBS with 0.02% sodium azide, 0.5% protective protein and 50% glycerol, pH7.4

Applications Recommended Dilution

WB	1:500-1:2000
IHC	1:100-1:300
ELISA	1:5000

Data



Western Blot analysis of A549 cells with Phospho-HBP1 (Ser402) Polyclonal Antibody.
Observed Mw:58kDa
Calculated Mw:58kDa

Preparation & Storage

Storage Store at -20°C. Avoid freeze / thaw cycles.

Background

Transcriptional repressor that binds to the promoter region of target genes. Plays a role in the regulation of the cell cycle and of the Wnt pathway. Binds preferentially to the sequence 5'-TTCATTCATTCA-3'. Binding to the H1F0 promoter is enhanced by interaction with RB1. Disrupts the interaction between DNA and TCF4.

For Research Use Only