

## Phospho-CDK5 (Tyr15) Polyclonal Antibody

Catalog No. E-AB-21050

**Note:** Centrifuge before opening to ensure complete recovery of vial contents.

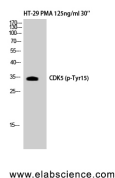
### Description

|                     |  |
|---------------------|--|
| <b>Reactivity</b>   | Human, Mouse, Rat, Monkey  |
| <b>Immunogen</b>    | Synthesized peptide derived from human Cdk5 around the phosphorylation site of Tyr15 |
| <b>Host</b>         | Rabbit   |
| <b>Isotype</b>      | IgG  |
| <b>Purification</b> | Affinity purification  |
| <b>Conjugation</b>  | Unconjugated   |
| <b>Buffer</b>       | PBS with 0.02% sodium azide, 0.5% protective protein and 50% glycerol, pH7.4         |

### Applications Recommended Dilution

|              |              |
|--------------|--------------|
| <b>WB</b>    | 1:500-1:2000 |
| <b>IHC</b>   | 1:100-1:300  |
| <b>ELISA</b> | 1:5000       |

### Data



Western Blot analysis of HT-29+PMA cells with  
Phospho-Cdk5 (Tyr15) Polyclonal Antibody  
**Observed Mw:33kDa**  
**Calculated Mw:33kDa**

### Preparation & Storage

**Storage** Store at -20°C. Avoid freeze / thaw cycles.

### Background

Proline-directed serine/threonine-protein kinase essential for neuronal cell cycle arrest and differentiation and may be involved in apoptotic cell death in neuronal diseases by triggering abortive cell cycle re-entry. Interacts with D1 and D3-type G1 cyc

### For Research Use Only