

## Phospho-MAP2K1 (Thr386) Polyclonal Antibody

Catalog No. E-AB-21066

**Note:** Centrifuge before opening to ensure complete recovery of vial contents.

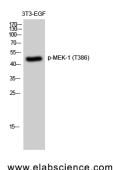
### Description

<b>Reactivity</b>	Human, Mouse, Rat
<b>Immunogen</b>	Synthesized peptide derived from human MEK-1 around the phosphorylation site of Thr386
<b>Host</b>	Rabbit
<b>Isotype</b>	IgG
<b>Purification</b>	Affinity purification
<b>Conjugation</b>	Unconjugated
<b>Buffer</b>	PBS with 0.02% sodium azide, 0.5% protective protein and 50% glycerol, pH7.4

### Applications Recommended Dilution

<b>WB</b>	1:500-1:2000
<b>ELISA</b>	1:10000

### Data



Western Blot analysis of 3T3-EGF cells using Phospho-MAP2K1 (Thr386) Polyclonal Antibody at dilution of 1:2000

**Observed Mw:45kDa**  
**Calculated Mw:43kDa**

### Preparation & Storage

**Storage** Store at -20°C. Avoid freeze / thaw cycles.

### Background

Catalyzes the concomitant phosphorylation of a threonine and a tyrosine residue in a Thr-Glu-Tyr sequence located in MAP kinases. Activates ERK1 and ERK2 MAP kinases.

### For Research Use Only