

## Phospho-BCL6 (Ser333) Polyclonal Antibody

Catalog No. E-AB-21076

**Note:** Centrifuge before opening to ensure complete recovery of vial contents.

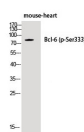
### Description

<b>Reactivity</b>	Human,Mouse,Rat
<b>Immunogen</b>	Synthesized peptide derived from human Bcl-6 around the phosphorylation site of Ser333
<b>Host</b>	Rabbit
<b>Isotype</b>	IgG
<b>Purification</b>	Affinity purification
<b>Conjugation</b>	Unconjugated
<b>Buffer</b>	PBS with 0.02% sodium azide, 0.5% protective protein and 50% glycerol, pH7.4

### Applications Recommended Dilution

<b>WB</b>	1:500-1:2000
<b>ELISA</b>	1:5000

### Data



www.elabscience.com

Western Blot analysis of Mouse heart using Phospho-BCL6 (Ser333) Polyclonal Antibody at dilution of 1:1000

**Observed Mw:79kDa**  
**Calculated Mw:79kDa**

### Preparation & Storage

**Storage** Store at -20°C. Avoid freeze / thaw cycles.

### Background

Transcriptional repressor which is required for germinal center formation and antibody affinity maturation. Probably plays an important role in lymphomagenesis.

### For Research Use Only