

## Phospho-FGFR1 (Tyr654) Polyclonal Antibody

**Catalog No.** E-AB-21100

*Note:* Centrifuge before opening to ensure complete recovery of vial contents.

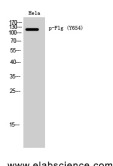
### Description

<b>Reactivity</b>	Human,Mouse,Rat
<b>Immunogen</b>	Synthesized peptide derived from human Flg around the phosphorylation site of Tyr654
<b>Host</b>	Rabbit
<b>Isotype</b>	IgG
<b>Purification</b>	Affinity purification
<b>Conjugation</b>	Unconjugated
<b>Buffer</b>	PBS with 0.02% sodium azide, 0.5% protective protein and 50% glycerol, pH7.4

### Applications Recommended Dilution

<b>WB</b>	1:500-1:2000
<b>IF</b>	1:100-1:300
<b>ELISA</b>	1:20000

### Data



Western Blot analysis of HeLa cells using Phospho-FGFR1 (Tyr654) Polyclonal Antibody at dilution of 1:1000

**Observed Mw:120kDa**  
**Calculated Mw:92kDa**

### Preparation & Storage

**Storage** Store at -20°C. Avoid freeze / thaw cycles.

### Background

Receptor for basic fibroblast growth factor. Receptor for FGF23 in the presence of KL (By similarity). A shorter form of the receptor could be a receptor for FGF1 (aFGF).

### For Research Use Only