

Phospho-WASF1 (Tyr125) Polyclonal Antibody

Catalog No. E-AB-21184

Note: Centrifuge before opening to ensure complete recovery of vial contents.

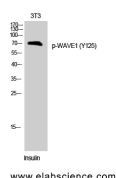
Description

Reactivity	Human, Mouse, Rat
Immunogen	Synthesized peptide derived from human WAVE1 around the phosphorylation site of Tyr125
Host	Rabbit
Isotype	IgG
Purification	Affinity purification
Conjugation	Unconjugated
Buffer	PBS with 0.02% sodium azide, 0.5% protective protein and 50% glycerol, pH7.4

Applications Recommended Dilution

WB	1:500-1:2000
IHC	1:100-1:300
IF	1:200-1:1000
ELISA	1:5000

Data



Western Blot analysis of 3T3 cells with Phospho-WASF1 (Tyr125) Polyclonal Antibody
Observed Mw:70kDa
Calculated Mw:62kDa

Preparation & Storage

Storage Store at -20°C. Avoid freeze / thaw cycles.

Background

The protein encoded by this gene, a member of the Wiskott-Aldrich syndrome protein (WASP)-family, plays a critical role downstream of Rac, a Rho-family small GTPase, in regulating the actin cytoskeleton required for membrane ruffling. It has been shown to associate with an actin nucleation core Arp2/3 complex while enhancing actin polymerization in vitro. Wiskott-Aldrich syndrome is a disease of the immune system, likely due to defects in regulation of actin cytoskeleton. Multiple alternatively spliced transcript variants encoding the same protein have been found for this gene. WASF1 (WAS Protein Family Member 1) is a Protein Coding gene. Diseases associated with WASF1 include

For Research Use Only

Wiskott-Aldrich Syndrome and Spinocerebellar Ataxia With Axonal Neuropathy Type 2. Among its related pathways are Innate Immune System and RET signaling. GO annotations related to this gene include actin binding and Rac GTPase binding. An important paralog of this gene is WASF2.