

Phospho-BRAF (Ser446) Polyclonal Antibody

Catalog No. E-AB-21224

Note: Centrifuge before opening to ensure complete recovery of vial contents.

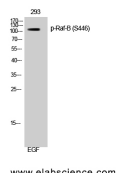
Description

| | |
|---------------------|--|
| Reactivity | Human, Mouse |
| Immunogen | Synthesized peptide derived from human Raf-B around the phosphorylation site of Ser446 |
| Host | Rabbit |
| Isotype | IgG |
| Purification | Affinity purification |
| Conjugation | Unconjugated |
| Buffer | PBS with 0.02% sodium azide, 0.5% protective protein and 50% glycerol, pH7.4 |

Applications Recommended Dilution

| | |
|--------------|--------------|
| WB | 1:500-1:2000 |
| IHC | 1:100-1:300 |
| ELISA | 1:10000 |

Data



Western Blot analysis of 293T cells using Phospho-BRAF (Ser446) Polyclonal Antibody at dilution of 1:1000

Observed Mw:110kDa
Calculated Mw:84kDa

Preparation & Storage

Storage Store at -20°C. Avoid freeze / thaw cycles.

Background

Involved in the transduction of mitogenic signals from the cell membrane to the nucleus. May play a role in the postsynaptic responses of hippocampal neuron.

For Research Use Only