

## Phospho-TOB1 (Ser164) Polyclonal Antibody

**Catalog No.** E-AB-21248

*Note:* Centrifuge before opening to ensure complete recovery of vial contents.

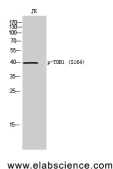
### Description

<b>Reactivity</b>	Human, Mouse, Rat
<b>Immunogen</b>	Synthesized peptide derived from human TOB1 around the phosphorylation site of Ser164
<b>Host</b>	Rabbit
<b>Isotype</b>	IgG
<b>Purification</b>	Affinity purification
<b>Conjugation</b>	Unconjugated
<b>Buffer</b>	PBS with 0.02% sodium azide, 0.5% protective protein and 50% glycerol, pH7.4

### Applications Recommended Dilution

<b>WB</b>	1:500-1:2000
<b>IHC</b>	1:100-1:300
<b>ELISA</b>	1:5000

### Data



Western Blot analysis of Jurkat cells with Phospho-TOB1 (Ser164) Polyclonal Antibody  
**Observed Mw:40kDa**  
**Calculated Mw:38kDa**

### Preparation & Storage

**Storage** Store at -20°C. Avoid freeze / thaw cycles.

### Background

This gene encodes a member of the transducer of erbB-2 /B-cell translocation gene protein family. Members of this family are anti-proliferative factors that have the potential to regulate cell growth. The encoded protein may function as a tumor suppressor. Alternate splicing results in multiple transcript variants. TOB1 (Transducer Of ERBB2, 1) is a Protein Coding gene. Among its related pathways are MAPK Signaling: Mitogen Stimulation Pathway and IL-2 Gene Expression in Activated and Quiescent T-Cells. GO annotations related to this gene include transcription corepressor activity and SMAD binding. An important paralog of this gene is TOB2.

### For Research Use Only