

## Phospho-CTTN (Tyr466) Polyclonal Antibody

Catalog No. E-AB-21254

*Note:* Centrifuge before opening to ensure complete recovery of vial contents.

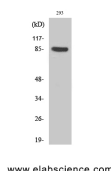
### Description

<b>Reactivity</b>	Human, Mouse, Rat, Monkey
<b>Immunogen</b>	Synthesized peptide derived from human Cortactin around the phosphorylation site of Tyr466
<b>Host</b>	Rabbit
<b>Isotype</b>	IgG
<b>Purification</b>	Affinity purification
<b>Conjugation</b>	Unconjugated
<b>Buffer</b>	PBS with 0.02% sodium azide, 0.5% protective protein and 50% glycerol, pH7.4

### Applications Recommended Dilution

<b>WB</b>	1:500-1:2000
<b>IHC</b>	1:100-1:300
<b>IF</b>	1:200-1:1000
<b>ELISA</b>	1:20000

### Data



Western Blot analysis of 293T cells using Phospho-CTTN (Tyr466) Polyclonal Antibody at dilution of 1:500

**Observed Mw:80kDa**  
**Calculated Mw:62kDa**

### Preparation & Storage

**Storage** Store at -20°C. Avoid freeze / thaw cycles.

### Background

Contributes to the organization of the actin cytoskeleton and cell structure. Plays a role in the regulation of cell migration. Plays a role in the invasiveness of cancer cells, and the formation of metastases.

### For Research Use Only