

Phospho-PKC delta (Ser645) Polyclonal Antibody

Catalog No. E-AB-21256

Note: Centrifuge before opening to ensure complete recovery of vial contents.

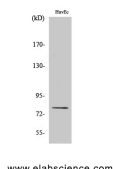
Description

Reactivity	Human,Monkey
Immunogen	Synthesized peptide derived from human PKC δ around the phosphorylation site of Ser645
Host	Rabbit
Isotype	IgG
Purification	Affinity purification
Conjugation	Unconjugated
Buffer	PBS with 0.02% sodium azide, 0.5% protective protein and 50% glycerol, pH7.4

Applications Recommended Dilution

WB	1:500-1:2000
IHC	1:100-1:300
ELISA	1:10000

Data



Western Blot analysis of HuvEc cells using Phospho-PKC delta (Ser645) Polyclonal Antibody at dilution of 1:1000

Observed Mw:77kDa
Calculated Mw:77kDa

Preparation & Storage

Storage Store at -20°C. Avoid freeze / thaw cycles.

Background

This is calcium-independent, phospholipid-dependent, serine- and threonine-specific enzyme. PKC is activated by diacylglycerol which in turn phosphorylates a range of cellular proteins. PKC also serves as the receptor for phorbol esters, a class of tumor promoters. May play a role in antigen-dependent control of B-cell function. Phosphorylates MUC1 in the C-terminal and regulates the interaction between MUC1 and beta-catenin.

For Research Use Only