

## Phospho-c-Rel (Ser503) Polyclonal Antibody

**Catalog No.** E-AB-21257

**Note:** Centrifuge before opening to ensure complete recovery of vial contents.

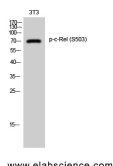
### Description

<b>Reactivity</b>	Human
<b>Immunogen</b>	Synthesized peptide derived from human c-Rel around the phosphorylation site of Ser503
<b>Host</b>	Rabbit
<b>Isotype</b>	IgG
<b>Purification</b>	Affinity purification
<b>Conjugation</b>	Unconjugated
<b>Buffer</b>	PBS with 0.02% sodium azide, 0.5% protective protein and 50% glycerol, pH7.4

### Applications Recommended Dilution

<b>WB</b>	1:500-1:2000
<b>IHC</b>	1:100-1:300
<b>ELISA</b>	1:5000

### Data



Western Blot analysis of 3T3 cells with Phospho-c-Rel (Ser503) Polyclonal Antibody at dilution of 1:1000  
**Calculated Mw:69kDa**

### Preparation & Storage

**Storage** Store at -20°C. Avoid freeze / thaw cycles.

### Background

The REL gene encodes c-Rel, a transcription factor that is a member of the Rel/NFκB family, which also includes RELA (MIM 164014), RELB (604758), NFκB1 (MIM 164011), and NFκB2 (MIM 164012). These proteins are related through a highly conserved N-terminal region termed the 'Rel domain,' which is responsible for DNA binding, dimerization, nuclear localization, and binding to the NFκB inhibitor

### For Research Use Only