

Phospho-14-3-3 zeta/delta (Ser58) Polyclonal Antibody

Catalog No. E-AB-21258

Note: Centrifuge before opening to ensure complete recovery of vial contents.

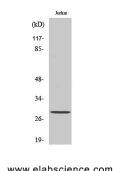
Description

Reactivity	Human,Mouse,Rat
Immunogen	Synthesized peptide derived from human 14-3-3 ζ around the phosphorylation site of Ser58
Host	Rabbit
Isotype	IgG
Purification	Affinity purification
Conjugation	Unconjugated
Buffer	PBS with 0.02% sodium azide, 0.5% protective protein and 50% glycerol, pH7.4

Applications Recommended Dilution

WB	1:500-1:2000
IHC	1:100-1:300
IF	1:200-1:1000
ELISA	1:40000

Data



Western Blot analysis of Jurkat cells using
Phospho-14-3-3 zeta/delta (Ser58) Polyclonal
Antibody at dilution of 1:2000

Observed Mw:30kDa
Calculated Mw:28kDa

Preparation & Storage

Storage Store at -20°C. Avoid freeze / thaw cycles.

Background

Adapter protein implicated in the regulation of a large spectrum of both general and specialized signaling pathways. Binds to a large number of partners, usually by recognition of a phosphoserine or phosphothreonine motif. Binding generally results in the modulation of the activity of the binding partner.

For Research Use Only