

## Phospho-c-Myc (Ser62) Polyclonal Antibody

Catalog No. E-AB-21265

**Note:** Centrifuge before opening to ensure complete recovery of vial contents.

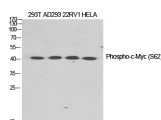
### Description

<b>Reactivity</b>	Human, Mouse, Rat
<b>Immunogen</b>	Synthesized peptide derived from human c-Myc around the phosphorylation site of Ser62
<b>Host</b>	Rabbit
<b>Isotype</b>	IgG
<b>Purification</b>	Affinity purification
<b>Conjugation</b>	Unconjugated
<b>Buffer</b>	PBS with 0.02% sodium azide, 0.5% protective protein and 50% glycerol, pH7.4

### Applications Recommended Dilution

<b>WB</b>	1:500-1:2000
<b>IHC</b>	1:100-1:300
<b>IF</b>	1:200-1:1000
<b>ELISA</b>	1:40000

### Data



www.elabscience.com

Western Blot analysis of various cells with Phospho-c-Myc (Ser62) Polyclonal Antibody at dilution of 1:1000

**Observed Mw:50-60kDa**

**Calculated Mw:49kDa**

### Preparation & Storage

**Storage** Store at -20°C. Avoid freeze / thaw cycles.

### Background

Participates in the regulation of gene transcription. Binds DNA in a non-specific manner, yet also specifically recognizes the core sequence 5'-CAC[GA]TG-3'. Seems to activate the transcription of growth-related genes.

### For Research Use Only