

Phospho-EEF2 (Thr56) Polyclonal Antibody

Catalog No. E-AB-21273

Note: Centrifuge before opening to ensure complete recovery of vial contents.

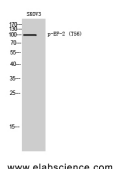
Description

Reactivity	Human,Mouse,Rat
Immunogen	Synthesized peptide derived from human EF-2 around the phosphorylation site of Thr56
Host	Rabbit
Isotype	IgG
Purification	Affinity purification
Conjugation	Unconjugated
Buffer	PBS with 0.02% sodium azide, 0.5% protective protein and 50% glycerol, pH7.4

Applications Recommended Dilution

WB	1:500-1:2000
IHC	1:100-1:300
IF	1:200-1:1000
ELISA	1:10000

Data



Western Blot analysis of SKOV3 cells using Phospho-EEF2 (Thr56) Polyclonal Antibody at dilution of 1:2000

Observed Mw:100kDa
Calculated Mw:95kDa

Preparation & Storage

Storage Store at -20°C. Avoid freeze / thaw cycles.

Background

This gene encodes a member of the GTP-binding translation elongation factor family. This protein is an essential factor for protein synthesis. It promotes the GTP-dependent translocation of the nascent protein chain from the A-site to the P-site of the ribosome. This protein is completely inactivated by EF-2 kinase phosphorylation.

For Research Use Only