

Phospho-ESPL1 (Ser801) Polyclonal Antibody

Catalog No. E-AB-21274

Note: Centrifuge before opening to ensure complete recovery of vial contents.

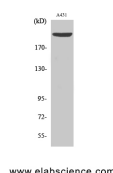
Description

Reactivity	Human,Mouse
Immunogen	Synthesized peptide derived from human Separase around the phosphorylation site of Ser801
Host	Rabbit
Isotype	IgG
Purification	Affinity purification
Conjugation	Unconjugated
Buffer	PBS with 0.02% sodium azide, 0.5% protective protein and 50% glycerol, pH7.4

Applications Recommended Dilution

WB	1:500-1:2000
IHC	1:100-1:300
IF	1:200-1:1000
ELISA	1:40000

Data



Western Blot analysis of A431 cells using Phospho-ESPL1 (Ser801) Polyclonal Antibody at dilution of 1:1000

Observed Mw:230kDa
Calculated Mw:233kDa

Preparation & Storage

Storage Store at -20°C. Avoid freeze / thaw cycles.

Background

Caspase-like protease, which plays a central role in the chromosome segregation by cleaving the SCC1/RAD21 subunit of the cohesin complex at the onset of anaphase. During most of the cell cycle, it is inactivated by different mechanisms.

For Research Use Only