

Phospho-CRMP2 (Thr514) Polyclonal Antibody

Catalog No. E-AB-21290

Note: Centrifuge before opening to ensure complete recovery of vial contents.

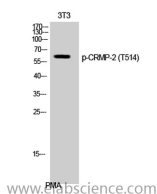
Description

Reactivity	Human, Mouse, Rat
Immunogen	Synthesized peptide derived from human CRMP-2 around the phosphorylation site of T514.
Host	Rabbit
Isotype	IgG
Purification	Affinity purification
Buffer	PBS with 0.02% sodium azide, 0.5% protective protein and 50% glycerol, pH7.4

Applications Recommended Dilution

WB	1:500-1:2000
IHC	1:100-1:300
IF	1:200-1:1000
ELISA	1:5000

Data



Western Blot analysis of 3T3 cells with Phospho-CRMP2 (Thr514) Polyclonal Antibody
Observed Mw:65kDa
Calculated Mw:62kDa

Preparation & Storage

Storage Store at -20°C. Avoid freeze / thaw cycles.

Background

Necessary for signaling by class 3 semaphorins and subsequent remodeling of the cytoskeleton. Plays a role in axon guidance, neuronal growth cone collapse and cell migration.

For Research Use Only