

KT3-Tag Monoclonal Antibody

Catalog No. E-AB-20020

Note: Centrifuge before opening to ensure complete recovery of vial contents.

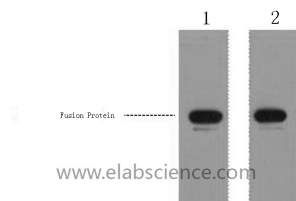
Description

Immunogen	Synthetic Peptide
Host	Mouse
Isotype	IgG
Clone	Clone:9K3
Purification	Protein A purification
Buffer	PBS with 0.02% sodium azide and 50% glycerol pH 7.4.

Applications Recommended Dilution

WB 1:2000-10000

Data



Western Blot analysis of 1 μ g KT3 fusion protein using KT3-Tag Monoclonal Antibody at dilution of 1) 1:5000, 2) 1:10000.

Preparation & Storage

Storage Store at -20°C. Avoid freeze / thaw cycles.

For Research Use Only