

GAPDH Monoclonal Antibody

Catalog No. E-AB-20032

Note: Centrifuge before opening to ensure complete recovery of vial contents.

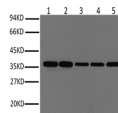
Description

Reactivity	Human, Mouse, Rat, Monkey, Cow, Dog, Hamster, Pig, Rabbit, Sheep, Insect, Yeast
Immunogen	Synthetic Peptide
Host	Mouse
Isotype	IgG
Clone	Clone:9S5
Purification	Protein A purification
Conjugation	Unconjugated
Buffer	PBS with 0.02% sodium azide and 50% glycerol pH 7.4.

Applications Recommended Dilution

WB 1:500-1:2000,
IHC 1:100-1:300, IF
1:100-1:300

Data

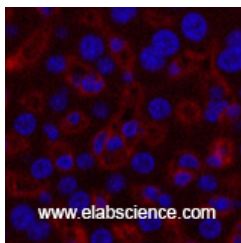


www.elabscience.com

Western Blot analysis of HeLa, Rat brain, Rabbit muscle, Sheep muscle, Mouse brain using GAPDH Monoclonal Antibody at dilution of 1:1000.
Observed Mw:37kDa



Immunohistochemistry of paraffin-embedded Human colon tissue using GAPDH Monoclonal Antibody at dilution of 1:200.



www.elabscience.com

Immunofluorescence analysis of Mouse liver tissue using GAPDH Monoclonal Antibody at dilution of 1:200.

Preparation & Storage

For Research Use Only

Storage Store at -20°C. Avoid freeze / thaw cycles.

Background

Glyceraldehyde-3-phosphate dehydrogenase (GAPDH) catalyzes the phosphorylation of glyceraldehyde-3-phosphate during glycolysis. GAPDH participates in nuclear events including transcription, binding RNA, RNA transportation, DNA replication, DNA repair and apoptosis. Being stably and constitutively expressed at high levels in most tissues and cells, GAPDH is considered a housekeeping protein. It was widely used as a control for RT-PCR and also loading control in electrophoresis and Western blotting. GAPDH is normally expressed in cellular cytoplasm or membrane, but can occasionally translocate to the nucleus post modification such as S-nitrosylation.

For Research Use Only