

## GAPDH Monoclonal Antibody

Catalog No. E-AB-20079

**Note:** Centrifuge before opening to ensure complete recovery of vial contents.

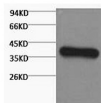
### Description

|                     |  |
|---------------------|--|
| <b>Reactivity</b>   | Human, Mouse, Rat, Monkey, Cow, Dog, Hamster, Pig, Rabbit, Sheep |
| <b>Immunogen</b>    | Synthetic Peptide  |
| <b>Host</b>         | Mouse  |
| <b>Isotype</b>      | IgG  |
| <b>Clone</b>        | Clone:9A3  |
| <b>Purification</b> | Protein A purification   |
| <b>Buffer</b>       | PBS with 0.02% sodium azide and 50% glycerol pH 7.4.             |

### Applications Recommended Dilution

**WB 1:2000-5000**

### Data



www.elabscience.com

Western Blot analysis of HeLa cells using GAPDH  
Monoclonal Antibody at dilution of 1:3000.  
**Observed Mw:37kDa**

### Preparation & Storage

**Storage** Store at -20°C. Avoid freeze / thaw cycles.

### Background

Glyceraldehyde-3-phosphate dehydrogenase (GAPDH) catalyzes the phosphorylation of glyceraldehyde-3-phosphate during glycolysis. GAPDH participates in nuclear events including transcription, binding RNA, RNA transportation, DNA replication, DNA repair and apoptosis. Being stably and constitutively expressed at high levels in most tissues and cells, GAPDH is considered a housekeeping protein. It was widely used as a control for RT-PCR and also loading control in electrophoresis and Western blotting. GAPDH is normally expressed in cellular cytoplasm or membrane, but can occasionally translocate to the nucleus post modification such as S-nitrosylation.

### For Research Use Only