

## mCherry Monoclonal Antibody

Catalog No. E-AB-20087

**Note:** Centrifuge before opening to ensure complete recovery of vial contents.

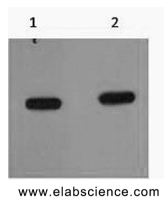
### Description

<b>Immunogen</b>	Recombinant Protein
<b>Host</b>	Mouse
<b>Isotype</b>	IgG
<b>Clone</b>	Clone:2F4
<b>Purification</b>	Protein A purification
<b>Conjugation</b>	Unconjugated
<b>Buffer</b>	PBS with 0.02% sodium azide and 50% glycerol pH 7.4.

### Applications Recommended Dilution

**WB** 1:5000-1:10000

### Data



Western Blot analysis of mCherry recombinant protein using mCherry Monoclonal Antibody at dilution of 1) 1:5000 2) 1:10000.

### Preparation & Storage

**Storage** Store at -20°C. Avoid freeze / thaw cycles.

### For Research Use Only