

beta actin Monoclonal Antibody

Catalog No. E-AB-20094

Note: Centrifuge before opening to ensure complete recovery of vial contents.

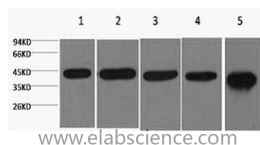
Description

Reactivity	Human,Mouse,Rat,Monkey,Chicken,Dog,Hamster,Rabbit
Immunogen	Synthetic Peptide
Host	Mouse
Isotype	IgG
Clone	Clone:2K4
Purification	Protein A purification
Buffer	PBS with 0.02% sodium azide and 50% glycerol pH 7.4.

Applications Recommended Dilution

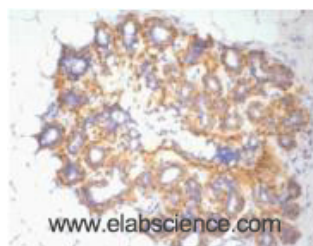
WB 1:3000-10000,
IHC 1:50-1:200

Data



Western Blot analysis of 1) 293T, 2) Mouse kidney, 3) HeLa, 4) Rat heart, 5) Rat brain using beta actin Monoclonal Antibody at dilution of 1:5000.

Observed Mw:43kDa
Calculated Mw:42kDa



Immunohistochemistry of paraffin-embedded Human ovary tissue using beta actin Monoclonal Antibody at dilution of 1:200.

Preparation & Storage

Storage Store at -20°C. Avoid freeze / thaw cycles.

Background

Beta actin, also named as ACTB and F-Actin, belongs to the actin family. Actins are highly conserved globular proteins that are involved in various types of cell motility and are ubiquitously expressed in all eukaryotic cells. At least six isoforms of actins are known in mammals and other vertebrates: alpha (ACTC1, cardiac muscle 1), alpha 1 (ACTA1, skeletal muscle) and 2 (ACTA2, aortic smooth muscle), beta (ACTB), gamma 1 (ACTG1) and 2 (ACTG2, enteric smooth muscle). Beta and gamma 1 are two non-muscle actin proteins. Most actins consist of 376aa, while ACTG2 (rich in muscles) has 375aa and ACTG1 (found in non-muscle cells) has only 374aa. Beta actin has been widely used as the internal control in RT-PCR and Western Blotting as a 42-kDa protein. However, the 41 kDa cleaved fragment of beta actin can be generated during apoptosis process. This antibody can recognize all the actins.

For Research Use Only