

beta Tubulin Monoclonal Antibody

Catalog Number:E-AB-20095

2 Publications



Note: Centrifuge before opening to ensure complete recovery of vial contents.

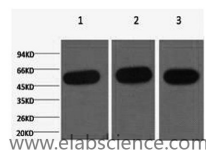
Description

Reactivity	Human,Mouse,Rat,Monkey,Chicken,Dog,Hamster,Rabbit
Immunogen	Synthetic Peptide
Host	Mouse
Isotype	IgG
Clone	Clone:5L3
Purification	Protein A purification
Formulation	PBS with 0.02% sodium azide and 50% glycerol pH 7.4.

Applications Recommended Dilution

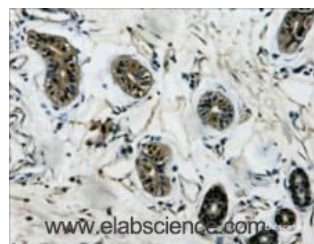
WB	1:500-10000
IHC	1:200
IP	1:200

Data

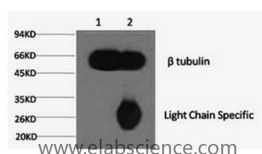


Western Blot analysis of 1) HeLa, 2) Mouse kidney, 3) Rat heart using beta Tubulin Monoclonal Antibody at dilution of 1:5000.

Observed Mw:55kDa
Calculated Mw:50kDa



Immunohistochemistry of paraffin-embedded Human colon tissue using beta Tubulin Monoclonal Antibody at dilution of 1:200.



1) Input: Mouse brain tissue, 2) IP product: IP at dilution of 1: 200

Preparation & Storage

Storage Store at -20°C. Avoid freeze / thaw cycles.

Background

TUBB3, the class III β tubulin or Tuj1, is selectively expressed in testis and neurons of the central and peripheral nervous

For Research Use Only

A Reliable Research Partner in Life Science and Medicine

Toll-free: 1-888-852-8623

Web: www.elabscience.com

Tel: 1-832-243-6086

Email: techsupport@elabscience.com

Fax: 1-832-243-6017

beta Tubulin Monoclonal Antibody

Catalog Number:E-AB-20095

2 Publications



system. It has been widely used as a marker for neurons. Aberrant expression of TUBB3 has also been found in various tumors of non-neural origin and can be used as a biomarker for cancer aggressiveness and a marker for the tendency to respond poorly to chemotherapy. This antibody is specific to TUBB3 but not cross-react with other tubulin isoforms.

For Research Use Only

A Reliable Research Partner in Life Science and Medicine

Toll-free: 1-888-852-8623

Tel: 1-832-243-6086

Fax: 1-832-243-6017

Web: www.elabscience.com

Email: techsupport@elabscience.com