

Myc-Tag Monoclonal Antibody

Catalog No. E-AB-20098

Note: Centrifuge before opening to ensure complete recovery of vial contents.

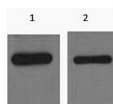
Description

Immunogen	Synthetic Peptide
Host	Mouse
Isotype	IgG
Clone	Clone:1I5
Purification	Protein A purification
Buffer	PBS with 0.02% sodium azide and 50% glycerol pH 7.4.

Applications Recommended Dilution

WB	1:500-10000
-----------	-------------

Data



www.elabscience.com

Western Blot analysis of His-MBP-C-Myc recombinant protein using Myc-Tag Monoclonal Antibody at dilution of 1) 1:5000, 2) 1:10000.

Preparation & Storage

Storage Store at -20°C. Avoid freeze / thaw cycles.

Background

Protein tags are protein or peptide sequences located either on the C- or N- terminal of the target protein, which facilitates one or several of the following characteristics: solubility, detection, purification, localization and expression. The c-Myc tag corresponds to amino acid residues(EQKLISEEDL) of the human c-Myc protein. It can be used for affinity chromatography, then used to separate recombinant, overexpressed protein from wild type protein expressed by the host organism. It can also be used in the isolation of protein complexes with multiple subunits. Myc-Tag mouse mAb detects recombinant proteins containing the Myc tag. The antibody recognizes the Myc-tag EQKLISEEDL fused to either the amino- or carboxy- terminus of targeted proteins.

For Research Use Only