

Flag-Tag Polyclonal Antibody

Catalog No. E-AB-20045

Note: Centrifuge before opening to ensure complete recovery of vial contents.

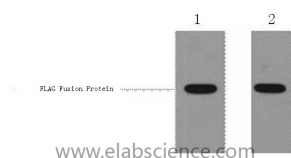
Description

Immunogen	Synthetic Peptide
Host	Rabbit
Isotype	IgG
Purification	Affinity purification
Buffer	PBS with 0.02% sodium azide and 50% glycerol pH 7.4.

Applications Recommended Dilution

WB	1:5000-20000
-----------	--------------

Data



Western Blot analysis of 1ug Flag fusion protein using Flag-Tag Polyclonal Antibody at dilution of 1:1000.

Preparation & Storage

Storage Store at -20°C. Avoid freeze / thaw cycles.

Background

Protein tags are protein or peptide sequences located either on the C- or N- terminal of the target protein, which facilitates one or several of the following characteristics: solubility, detection, purification, localization and expression. The DYKDDDDK(FLAG) peptide has been used extensively as a general tag in expression vectors. This peptide can be expressed and detected with the protein of interest as an amino-terminal or carboxy-terminal fusion. N-terminal FLAG vectors provide an Ek cleavage site for removal of the fusion tag. The FLAG peptide is likely to be located on the surface of a fusion protein because of its hydrophilic nature. As a result, the FLAG peptide is more likely to be accessible to antibodies.

For Research Use Only