

## mCherry-Tag Polyclonal Antibody

Catalog No. E-AB-20051

**Note:** Centrifuge before opening to ensure complete recovery of vial contents.

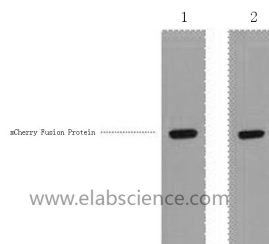
### Description

<b>Immunogen</b>	Recombinant Protein
<b>Host</b>	Rabbit
<b>Isotype</b>	IgG
<b>Purification</b>	Affinity purification
<b>Buffer</b>	PBS with 0.02% sodium azide and 50% glycerol pH 7.4.

### Applications Recommended Dilution

**WB** 1:5000-20000

### Data



Western Blot analysis of 1 $\mu$ g mCherry fusion protein using mCherry-Tag Polyclonal Antibody at dilution of 1:1000.

### Preparation & Storage

**Storage** Store at -20°C. Avoid freeze / thaw cycles.

### For Research Use Only