

GAPDH Polyclonal Antibody

Catalog No. E-AB-20059

Note: Centrifuge before opening to ensure complete recovery of vial contents.

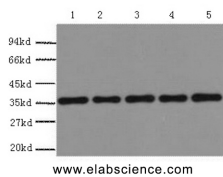
Description

Reactivity	Human, Mouse, Rat, Monkey, Chicken, Rabbit, Sheep, Xenopus
Immunogen	Recombinant Protein
Host	Rabbit
Isotype	IgG
Purification	Affinity purification
Conjugation	Unconjugated
Buffer	PBS with 0.02% sodium azide and 50% glycerol pH 7.4.

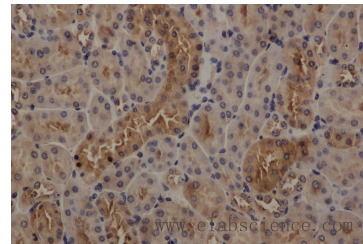
Applications Recommended Dilution

WB	1:2000-1:5000
IHC	1:50-1:200

Data



Western Blot analysis of 293T, Rat brain, NIH, 3T3, Sheep muscle, Rabbit testis using GAPDH Polyclonal Antibody at dilution of 1:5000.
Observed Mw:37kDa



Immunohistochemistry of paraffin-embedded mouse kidney using GAPDH antibody at dilution of 1:50

Preparation & Storage

Storage Store at -20°C. Avoid freeze / thaw cycles.

Background

Glyceraldehyde-3-phosphate dehydrogenase (GAPDH) catalyzes the phosphorylation of glyceraldehyde-3-phosphate during glycolysis. GAPDH participates in nuclear events including transcription, binding RNA, RNA transportation, DNA replication, DNA repair and apoptosis. Being stably and constitutively expressed at high levels in most tissues and cells, GAPDH is considered a housekeeping protein. It was widely used as a control for RT-PCR and also loading control in electrophoresis and Western blotting. GAPDH is normally expressed in cellular cytoplasm or membrane, but can occasionally translocate to the nucleus post modification such as S-nitrosylation.

For Research Use Only