

Lamin B1 Polyclonal Antibody

Catalog No. E-AB-20065

Note: Centrifuge before opening to ensure complete recovery of vial contents.

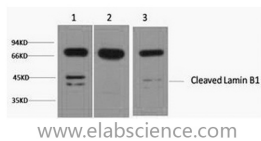
Description

Reactivity	Human,Mouse,Rat
Immunogen	Recombinant Protein
Host	Rabbit
Isotype	IgG
Purification	Affinity purification
Buffer	PBS with 0.02% sodium azide and 50% glycerol pH 7.4.

Applications Recommended Dilution

WB	1:1000-3000
-----------	-------------

Data



Western Blot analysis of 1) 293T, 2) Mouse brain, 3) Rat brain using Lamin B1 Polyclonal Antibody at dilution of 1:2000.

Observed Mw:68,45kDa

Calculated Mw:66kDa

Preparation & Storage

Storage Store at -20°C. Avoid freeze / thaw cycles.

Background

Lamins are components of the nuclear lamina, a fibrous layer on the nucleoplasmic side of the inner nuclear membrane, which is thought to provide a framework for the nuclear envelope and may also interact with chromatin.

For Research Use Only