

GAPDH Polyclonal Antibody

Catalog No. E-AB-20072

Note: Centrifuge before opening to ensure complete recovery of vial contents.

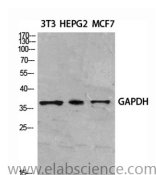
Description

| | |
|---------------------|--|
| Reactivity | Human, Mouse, Rat |
| Immunogen | Synthesized peptide derived from the N-terminal region of human GAPDH. |
| Host | Rabbit |
| Isotype | IgG |
| Purification | Affinity purification |
| Buffer | PBS with 0.02% sodium azide, 0.5% protective protein and 50% glycerol, pH7.4 |

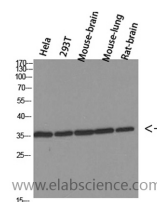
Applications Recommended Dilution

| | |
|--------------|--------------|
| WB | 1:500-1:2000 |
| IHC | 1:100-1:300 |
| ELISA | 1:20000 |

Data



Western Blot analysis of various cells using GAPDH Polyclonal Antibody at dilution of 1:2000.
Observed Mw:36kDa



Western Blot analysis of various cells using GAPDH Polyclonal Antibody at dilution of 1:1000.

Preparation & Storage

Storage Store at -20°C. Avoid freeze / thaw cycles.

Background

Glyceraldehyde-3-phosphate dehydrogenase (GAPDH) catalyzes the phosphorylation of glyceraldehyde-3-phosphate during glycolysis. GAPDH participates in nuclear events including transcription, binding RNA, RNA transportation, DNA replication, DNA repair and apoptosis. Being stably and constitutively expressed at high levels in most tissues and cells, GAPDH is considered a housekeeping protein. It was widely used as a control for RT-PCR and also loading control in electrophoresis and Western blotting. GAPDH is normally expressed in cellular cytoplasm or membrane, but can occasionally translocate to the nucleus post modification such as S-nitrosylation.

For Research Use Only