

## Lep Polyclonal Antibody

**Catalog No.** E-AB-40003

**Note:** Centrifuge before opening to ensure complete recovery of vial contents.

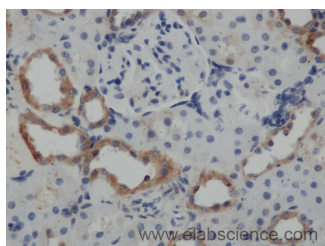
### Description

<b>Reactivity</b>	Rat
<b>Immunogen</b>	Recombinant Rat Leptin protein
<b>Host</b>	Rabbit
<b>Isotype</b>	IgG
<b>Purification</b>	Affinity purification
<b>Conjugation</b>	Unconjugated
<b>Buffer</b>	PBS with 0.05% Proclin300 and 50% glycerol, pH7.4.

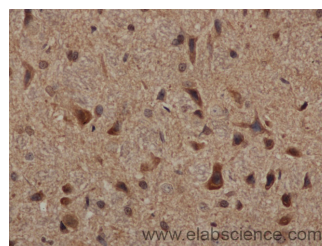
### Applications Recommended Dilution

**IHC 1:50-1:200**

### Data



Immunohistochemistry of paraffin-embedded Rat kidney using Lep Polyclonal Antibody at dilution of 1:50



Immunohistochemistry of paraffin-embedded Rat brain using Lep Polyclonal Antibody at dilution of 1:50

### Preparation & Storage

**Storage** Store at -20°C. Avoid freeze / thaw cycles.

### Background

Receptor for obesity factor (leptin). On ligand binding, mediates signaling through JAK2/STAT3. Involved in the regulation of fat metabolism and, in a hematopoietic pathway, required for normal lymphopoiesis. May play a role in reproduction. Can also mediate the ERK/FOS signaling pathway.

### For Research Use Only