

CRP Polyclonal Antibody

Catalog No. E-AB-40005

Note: Centrifuge before opening to ensure complete recovery of vial contents.

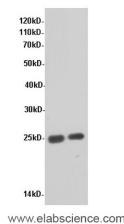
Description

Reactivity	Rat
Immunogen	Recombinant Rat C-reactive protein
Host	Rabbit
Isotype	IgG
Purification	Affinity purification
Conjugation	Unconjugated
Buffer	PBS with 0.05% Proclin300 and 50% glycerol, pH7.4.

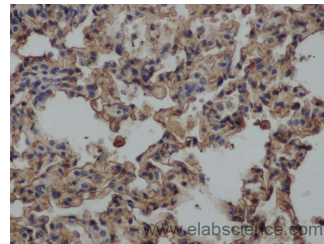
Applications Recommended Dilution

WB 1:500-1:1000,
IHC 1:50-1:100

Data



Western Blot analysis of Rat liver and Rat kidney tissue using CRP Polyclonal Antibody at dilution of 1:600
Calculated Mw:25kDa



Immunohistochemistry of paraffin-embedded Rat lung using CRP Polyclonal Antibody at dilution of 1:50

Preparation & Storage

Storage Store at -20°C. Avoid freeze / thaw cycles.

Background

Displays several functions associated with host defense: it promotes agglutination, bacterial capsular swelling, phagocytosis and complement fixation through its calcium-dependent binding to phosphorylcholine. Can interact with DNA and histones and may scavenge nuclear material released from damaged circulating cells.

For Research Use Only