

SOD1 Polyclonal Antibody

Catalog Number:E-AB-40047



Note: Centrifuge before opening to ensure complete recovery of vial contents.

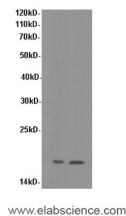
Description

Reactivity	Human
Immunogen	Recombinant Human Superoxide dismutase protein
Host	Rabbit
Isotype	IgG
Purification	Affinity purification
Conjugation	Unconjugated
Formulation	PBS with 0.05% Proclin300 and 50% glycerol, pH7.4.

Applications Recommended Dilution

WB	1:500-1:1000
-----------	--------------

Data



Western Blot analysis of HeLa and K562 cells using SOD1 Polyclonal Antibody at dilution of 1:600

Observed Mw:17kDa
Calculated Mw:17kDa

Preparation & Storage

Storage Store at -20°C. Avoid freeze / thaw cycles.

Background

Destroys radicals which are normally produced within the cells and which are toxic to biological systems.

For Research Use Only

A Reliable Research Partner in Life Science and Medicine

Toll-free: 1-888-852-8623

Web: www.elabscience.com

Tel: 1-832-243-6086

Email: techsupport@elabscience.com

Fax: 1-832-243-6017