

Cleaved-CASP3 p12 (D175) Polyclonal Antibody

Catalog Number: E-AB-30003

5 Publications



Note: Centrifuge before opening to ensure complete recovery of vial contents.

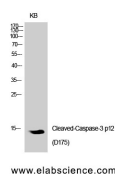
Description

| | |
|---------------------|--|
| Reactivity | Human |
| Immunogen | Synthesized peptide derived from the Internal region of human Caspase-3 p12 |
| Host | Rabbit |
| Isotype | IgG |
| Purification | Affinity purification |
| Conjugation | Unconjugated |
| Formulation | PBS with 0.02% sodium azide, 0.5% protective protein and 50% glycerol, pH7.4 |

Applications Recommended Dilution

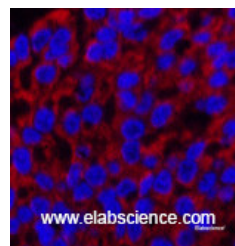
| | |
|------------|------------|
| WB | 1:500-2000 |
| IHC | 1:50-300 |
| IF | 1:50-300 |

Data



Western Blot analysis of KB cells using Cleaved-CASP3 p12 (D175) Polyclonal Antibody at dilution of 1:1000.

Observed Mw:20+35kDa
Calculated Mw:32kDa



Immunofluorescence analysis of Human liver cancer tissue using Cleaved-CASP3 p12 (D175) Polyclonal Antibody at dilution of 1:200.

Preparation & Storage

Storage Store at -20°C. Avoid freeze / thaw cycles.

Background

Involved in the activation cascade of caspases responsible for apoptosis execution. At the onset of apoptosis it proteolytically cleaves poly(ADP-ribose) polymerase (PARP) at a '216-Asp-Gly-217' bond. Cleaves and activates sterol regulatory element binding proteins (SREBPs) between the basic helix-loop-helix leucine zipper domain and the membrane attachment domain. Cleaves and activates caspase-6, -7 and -9. Involved in the cleavage of huntingtin.

For Research Use Only

A Reliable Research Partner in Life Science and Medicine

Toll-free: 1-888-852-8623

Web: www.elabscience.com

Tel: 1-832-243-6086

Email: techsupport@elabscience.com

Fax: 1-832-243-6017