

## Cleaved-CASP3 p17 (D175) Polyclonal Antibody

Catalog No. E-AB-30004

**Note:** Centrifuge before opening to ensure complete recovery of vial contents.

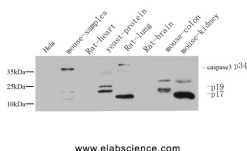
### Description

<b>Reactivity</b>	Human, Mouse, Rat
<b>Immunogen</b>	Synthesized peptide derived from the Internal region of human Caspase-3 p17
<b>Host</b>	Rabbit
<b>Isotype</b>	IgG
<b>Purification</b>	Affinity purification
<b>Conjugation</b>	Unconjugated
<b>Buffer</b>	PBS with 0.02% sodium azide, 0.5% protective protein and 50% glycerol, pH7.4

### Applications Recommended Dilution

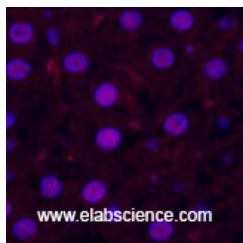
<b>WB</b>	1:500-2000
<b>IHC</b>	1:50-300
<b>IF</b>	1:50-300

### Data

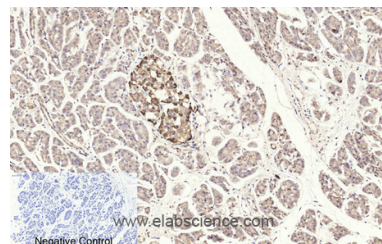


Western Blot analysis of various cells using Cleaved-CASP3 p17 (D175) Polyclonal Antibody at dilution of 1:1000.

**Observed Mw:20kDa**  
**Calculated Mw:32kDa**



Immunofluorescence analysis of Rat liver tissue using Cleaved-CASP3 p17 (D175) Polyclonal Antibody at dilution of 1:200.



Immunohistochemistry of paraffin-embedded Human stomach cancer tissue using Cleaved-CASP3 p17 (D175) Polyclonal Antibody at dilution of 1:200.

### For Research Use Only

## Preparation & Storage

**Storage** Store at -20°C. Avoid freeze / thaw cycles.

## Background

Involved in the activation cascade of caspases responsible for apoptosis execution. At the onset of apoptosis it proteolytically cleaves poly(ADP-ribose) polymerase (PARP) at a '216-Asp-Gly-217' bond. Cleaves and activates sterol regulatory element binding proteins (SREBPs) between the basic helix-loop-helix leucine zipper domain and the membrane attachment domain. Cleaves and activates caspase-6, -7 and -9. Involved in the cleavage of huntingtin.

## For Research Use Only