

Cleaved-CASP9 p35 (D315) Polyclonal Antibody

Catalog No. E-AB-30011

Note: Centrifuge before opening to ensure complete recovery of vial contents.

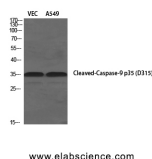
Description

Reactivity	Human
Immunogen	Synthesized peptide derived from the Internal region of human Caspase-9 p35
Host	Rabbit
Isotype	IgG
Purification	Affinity purification
Conjugation	Unconjugated
Buffer	PBS with 0.02% sodium azide, 0.5% protective protein and 50% glycerol, pH7.4

Applications Recommended Dilution

WB	1:500-2000
IHC	1:50-300
IF	1:50-300

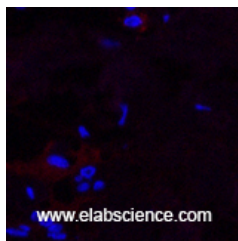
Data



www.elabscience.com

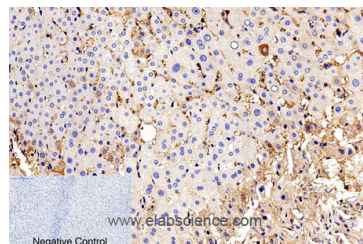
Western Blot analysis of VEC, A549 cells using Cleaved-CASP9 p35 (D315) Polyclonal Antibody at dilution of 1:1000.

Observed Mw:37kDa
Calculated Mw:46kDa



www.elabscience.com

Immunofluorescence analysis of Human breast tissue using Cleaved-CASP9 p35 (D315) Polyclonal Antibody at dilution of 1:200.



Negative Control

Immunohistochemistry of paraffin-embedded Human liver tissue using Cleaved-CASP9 p35 (D315) Polyclonal Antibody at dilution of 1:200.

For Research Use Only

Preparation & Storage

Storage Store at -20°C. Avoid freeze / thaw cycles.

Background

Involved in the activation cascade of caspases responsible for apoptosis execution. Binding of caspase-9 to Apaf-1 leads to activation of the protease which then cleaves and activates caspase-3. Proteolytically cleaves poly(ADP-ribose) polymerase (PARP). Isoform 2 lacks activity is an dominant-negative inhibitor of caspase-9.