

Cleaved-MMP15 (Y132) Polyclonal Antibody

Catalog No. E-AB-30049

Note: Centrifuge before opening to ensure complete recovery of vial contents.

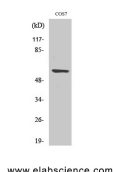
Description

Reactivity	Human,Monkey
Immunogen	Synthesized peptide derived from the Internal region of human MMP-15
Host	Rabbit
Isotype	IgG
Purification	Affinity purification
Conjugation	Unconjugated
Buffer	PBS with 0.02% sodium azide, 0.5% protective protein and 50% glycerol, pH7.4

Applications Recommended Dilution

WB	1:500-1:2000
ELISA	1:10000

Data



Western Blot analysis of COS7 cells with Cleaved-MMP15 (Y132) Polyclonal Antibody
Observed Mw:61kDa
Calculated Mw:76kDa

Preparation & Storage

Storage Store at -20°C. Avoid freeze / thaw cycles.

Background

Proteins of the matrix metalloproteinase (MMP) family are involved in the breakdown of extracellular matrix in normal physiological processes, such as embryonic development, reproduction, and tissue remodeling, as well as in disease processes, such as arthritis and metastasis. Most MMP's are secreted as inactive proproteins which are activated when cleaved by extracellular proteinases. However, the protein encoded by this gene is a member of the membrane-type MMP (MT-MMP) subfamily; each Human, Mouse member of this subfamily contains a potential transmembrane domain suggesting that these proteins are expressed at the cell surface rather than secreted.

For Research Use Only