

Cleaved-F2 (R327) Polyclonal Antibody

Catalog No. E-AB-30062

Note: Centrifuge before opening to ensure complete recovery of vial contents.

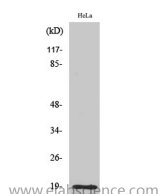
Description

Reactivity	Human
Immunogen	Synthesized peptide derived from the Internal region of human Thrombin APII
Host	Rabbit
Isotype	IgG
Purification	Affinity purification
Buffer	PBS with 0.02% sodium azide, 0.5% protective protein and 50% glycerol pH 7.4.

Applications Recommended Dilution

WB	1:500-1:2000
ELISA	1:20000

Data



Western Blot analysis of HeLa cells with Cleaved-F2
(R327) Polyclonal Antibody

Observed Mw:19kDa
Calculated Mw:70kDa

Preparation & Storage

Storage Store at -20°C. Avoid freeze / thaw cycles.

Background

Coagulation factor II is proteolytically cleaved to form thrombin in the first step of the coagulation cascade which ultimately results in the stemming of blood loss. F2 also plays a role in maintaining vascular integrity during development and postnatal life. Finally, peptides derived from the C-terminus of this protein have antimicrobial activity against *E. coli* and *P. aeruginosa*. Mutations in F2 leads to various forms of thrombosis and dysprothrombinemia.

For Research Use Only