

AIM2 Polyclonal Antibody

Catalog No. E-AB-30449

Note: Centrifuge before opening to ensure complete recovery of vial contents.

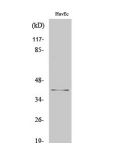
Description

Reactivity	Human
Immunogen	Synthesized peptide derived from the Internal region of human AIM2
Host	Rabbit
Isotype	IgG
Purification	Affinity purification
Conjugation	Unconjugated
Buffer	PBS with 0.02% sodium azide, 0.5% protective protein and 50% glycerol, pH7.4

Applications Recommended Dilution

WB	1:500-1:2000
IHC	1:100-1:300
IF	1:200-1:1000
ELISA	1:40000

Data



www.elabscience.com

Western Blot analysis of HuvEc cells with AIM2
Polyclonal Antibody.
Observed Mw:39kDa
Calculated Mw:39kDa

Preparation & Storage

Storage Store at -20°C. Avoid freeze / thaw cycles.

Background

Interferon-inducible protein AIM2 (Absent in melanoma 2) is a 343 amino acid protein belonging to the HIN-200 family. Induced by IFN- γ , AIM2 is thought to act as a tumor suppressor by repressing NF κ B transcriptional activity. Localized to the nucleus, AIM2 contains one DAPIN domain and one HIN-200 domain. The DAPIN domain is composed mostly of α -helixes and is a protein-protein interaction domain capable of binding other DAPIN domains. The HIN-200 domain has been shown to bind directly to DNA, which, along with the binding of another protein ASC, results in the activation of Caspase-1.

For Research Use Only