

ANT3 Polyclonal Antibody

Catalog No. E-AB-30506

Note: Centrifuge before opening to ensure complete recovery of vial contents.

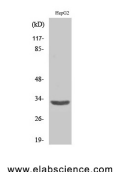
Description

Reactivity	Human
Immunogen	Synthesized peptide derived from the Internal region of human ANT3
Host	Rabbit
Isotype	IgG
Purification	Affinity purification
Conjugation	Unconjugated
Buffer	PBS with 0.02% sodium azide, 0.5% protective protein and 50% glycerol, pH7.4

Applications Recommended Dilution

WB	1:500-1:2000
IHC	1:100-1:300
ELISA	1:40000

Data



Western Blot analysis of HepG2 cells using ANT3 Polyclonal Antibody at dilution of 1:2000.

Observed Mw:32kDa
Calculated Mw:33kDa

Preparation & Storage

Storage Store at -20°C. Avoid freeze / thaw cycles.

Background

This gene is a member of the mitochondrial carrier subfamily of solute carrier protein genes. The product of this gene functions as a gated pore that translocates ADP from the cytoplasm into the mitochondrial matrix and ATP from the mitochondrial matrix into the cytoplasm. The protein is implicated in the function of the permeability transition pore complex (PTPC), which regulates the release of mitochondrial products that induce apoptosis. The human genome contains several non-transcribed pseudogenes of this gene. SLC25A6 (Solute Carrier Family 25 Member 6) is a Protein Coding gene. Diseases associated with SLC25A6 include Influenza and Autosomal Dominant Progressive External Ophthalmoplegia. Among its related pathways are Respiratory electron transport, ATP synthesis by chemiosmotic coupling, and heat production by uncoupling proteins, and Integration of energy metabolism. GO annotations related to

For Research Use Only

this gene include transporter activity and ATP:ADP antiporter activity. An important paralog of this gene is SLC25A5.