

## JUN Polyclonal Antibody

**Catalog No.** E-AB-30514

**Note:** Centrifuge before opening to ensure complete recovery of vial contents.

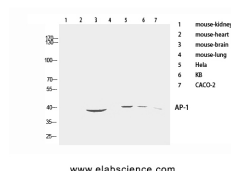
### Description

<b>Reactivity</b>	Human, Mouse, Rat
<b>Immunogen</b>	Synthesized peptide derived from human AP-1 around the non-phosphorylation site of Thr91.
<b>Host</b>	Rabbit
<b>Isotype</b>	IgG
<b>Purification</b>	Affinity purification
<b>Conjugation</b>	Unconjugated
<b>Buffer</b>	PBS with 0.02% sodium azide, 0.5% protective protein and 50% glycerol, pH7.4

### Applications Recommended Dilution

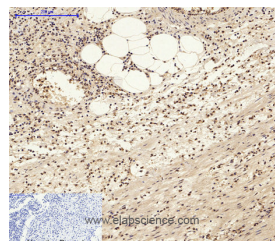
<b>WB</b>	1:500-1:2000
<b>IHC</b>	1:100-1:300
<b>IF</b>	1:100-1:300
<b>ELISA</b>	1:5000-1:20000

### Data

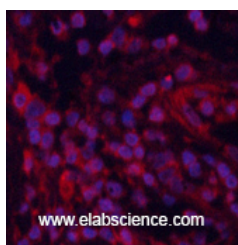


Western Blot analysis of various cells using JUN Polyclonal Antibody at dilution of 1:1000.

**Observed Mw:38kDa**  
**Calculated Mw:36kDa**



Immunohistochemistry of paraffin-embedded Human appendix tissue using JUN Polyclonal Antibody at dilution of 1:200.



Immunofluorescence analysis of Human lung tissue using JUN Polyclonal Antibody at dilution of 1:200.

### For Research Use Only

## Preparation & Storage

**Storage** Store at -20°C. Avoid freeze / thaw cycles.

## Background

Transcription factor that recognizes and binds to the enhancer heptamer motif 5'-TGA[CG]TCA-3'. Promotes activity of NR5A1 when phosphorylated by HIPK3 leading to increased steroidogenic gene expression upon cAMP signaling pathway stimulation.

---

## For Research Use Only

Toll-free: 1-888-852-8623

Web: [www.elabscience.com](http://www.elabscience.com)

Tel: 1-832-243-6086

Email: [techsupport@elabscience.com](mailto:techsupport@elabscience.com)

Fax: 1-832-243-6017