

## APC1 Polyclonal Antibody

Catalog No. E-AB-30521

**Note:** Centrifuge before opening to ensure complete recovery of vial contents.

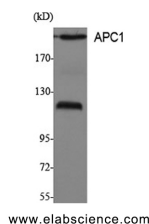
### Description

<b>Reactivity</b>	Human,Mouse
<b>Immunogen</b>	Synthesized peptide derived from the Internal region of human APC1
<b>Host</b>	Rabbit
<b>Isotype</b>	IgG
<b>Purification</b>	Affinity purification
<b>Conjugation</b>	Unconjugated
<b>Buffer</b>	PBS with 0.02% sodium azide, 0.5% BSA and 50% glycerol, pH7.4

### Applications Recommended Dilution

**WB 1:500-1:2000, IF  
1:100-1:300, ELISA  
1:10000**

### Data



Western Blot analysis of SK-N-SH cells with APC1  
Polyclonal Antibody.  
**Observed Mw:215kDa**  
**Calculated Mw:217kDa**

### Preparation & Storage

**Storage** Store at -20°C. Avoid freeze / thaw cycles.

### Background

This gene encodes a subunit of the anaphase-promoting complex. This complex is an E3 ubiquitin ligase that regulates progression through the metaphase to anaphase portion of the cell cycle by ubiquitinating proteins which targets them for degradation. Component of the anaphase promoting complex/cyclosome (APC/C), a cell cycle-regulated E3 ubiquitin ligase that controls progression through Human, Mouse mitosis and the G1 phase of the cell cycle.

### For Research Use Only