

ACER3 Polyclonal Antibody

Catalog No. E-AB-30523

Note: Centrifuge before opening to ensure complete recovery of vial contents.

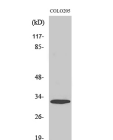
Description

| | |
|---------------------|--|
| Reactivity | Human,Mouse |
| Immunogen | Synthesized peptide derived from the Internal region of human APHC |
| Host | Rabbit |
| Isotype | IgG |
| Purification | Affinity purification |
| Conjugation | Unconjugated |
| Buffer | PBS with 0.02% sodium azide, 0.5% protective protein and 50% glycerol, pH7.4 |

Applications Recommended Dilution

| | |
|--------------|--------------|
| WB | 1:500-1:2000 |
| IHC | 1:100-1:300 |
| IF | 1:200-1:1000 |
| ELISA | 1:40000 |

Data



www.elabscience.com

Western Blot analysis of COLO205 cells with ACER3
Polyclonal Antibody
Observed Mw:35kDa
Calculated Mw:32kDa

Preparation & Storage

Storage Store at -20°C. Avoid freeze / thaw cycles.

Background

ACER3 (Alkaline Ceramidase 3) is a Protein Coding gene. Diseases associated with ACER3 include Farber Lipogranulomatosis and Partial Fetal Alcohol Syndrome. Among its related pathways are Sphingolipid metabolism and Metabolism. GO annotations related to this gene include hydrolase activity, acting on carbon-nitrogen (but not peptide) bonds, in linear amides and phytoceramidase activity.

For Research Use Only