

APOBEC3D/F Polyclonal Antibody

Catalog No. E-AB-30529

Note: Centrifuge before opening to ensure complete recovery of vial contents.

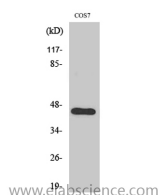
Description

Reactivity	Human,Monkey
Immunogen	Synthesized peptide derived from the Internal region of human APOBEC3D/F
Host	Rabbit
Isotype	IgG
Purification	Affinity purification
Buffer	PBS with 0.02% sodium azide,0.5% protective protein and 50% glycerol pH 7.4.

Applications Recommended Dilution

WB	1:500-1:2000
IHC	1:100-1:300
ELISA	1:40000

Data



Western Blot analysis of COS7 cells with
APOBEC3D/F Polyclonal Antibody.

Observed Mw:40kDa

Calculated Mw:47kDa

Preparation & Storage

Storage Store at -20°C. Avoid freeze / thaw cycles.

Background

APOBEC3D (Apolipoprotein B mRNA Editing Enzyme Catalytic Subunit 3D) is a Protein Coding gene. GO annotations related to this gene include hydrolase activity, acting on carbon-nitrogen (but not peptide) bonds, in cyclic amidines. An important paralog of this gene is ENSG00000284554. APOBEC3F (Apolipoprotein B mRNA Editing Enzyme Catalytic Subunit 3F) is a Protein Coding gene. Diseases associated with APOBEC3F include Ipex Syndrome and Theileriasis. GO annotations related to this gene include poly(A) RNA binding and hydrolase activity, acting on carbon-nitrogen (but not peptide) bonds, in cyclic amidines. An important paralog of this gene is ENSG00000284554.

For Research Use Only