

ARAF Polyclonal Antibody

Catalog No. E-AB-30548

Note: Centrifuge before opening to ensure complete recovery of vial contents.

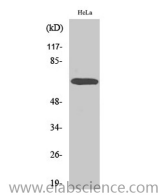
Description

Reactivity	Human,Mouse,Rat
Immunogen	Synthesized peptide derived from human A-Raf around the non-phosphorylation site of Y302.
Host	Rabbit
Isotype	IgG
Purification	Affinity purification
Buffer	PBS with 0.02% sodium azide, 0.5% protective protein and 50% glycerol, pH7.4

Applications Recommended Dilution

WB	1:500-1:2000
IHC	1:100-1:300
ELISA	1:20000

Data



Western Blot analysis of HeLa cells with ARAF
Polyclonal Antibody
Observed Mw:68kDa
Calculated Mw:68kDa

Preparation & Storage

Storage Store at -20°C. Avoid freeze / thaw cycles.

Background

Involved in the transduction of mitogenic signals from the cell membrane to the nucleus.

For Research Use Only