

ARAF Polyclonal Antibody

Catalog No. E-AB-30549

Note: Centrifuge before opening to ensure complete recovery of vial contents.

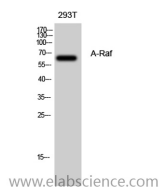
Description

Reactivity	Human,Mouse,Rat,Monkey
Immunogen	Synthesized peptide derived from the Internal region of human A-Raf
Host	Rabbit
Isotype	IgG
Purification	Affinity purification
Buffer	PBS with 0.02% sodium azide,0.5% protective protein and 50% glycerol pH 7.4.

Applications Recommended Dilution

WB	1:500-1:2000
ELISA	1:20000

Data



Western Blot analysis of 293T cells using ARAF Polyclonal Antibody at dilution of 1:500.

Observed Mw:68kDa
Calculated Mw:68kDa

Preparation & Storage

Storage Store at -20°C. Avoid freeze / thaw cycles.

Background

Involved in the transduction of mitogenic signals from the cell membrane to the nucleus.

For Research Use Only