

## SLC25A12 Polyclonal Antibody

**Catalog No.** E-AB-30550

*Note:* Centrifuge before opening to ensure complete recovery of vial contents.

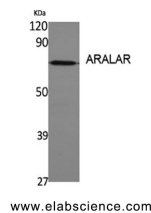
### Description

<b>Reactivity</b>	Human
<b>Immunogen</b>	Synthesized peptide derived from the Internal region of human ARALAR
<b>Host</b>	Rabbit
<b>Isotype</b>	IgG
<b>Purification</b>	Affinity purification
<b>Conjugation</b>	Unconjugated
<b>Buffer</b>	PBS with 0.02% sodium azide, 0.5% protective protein and 50% glycerol, pH7.4

### Applications Recommended Dilution

<b>WB</b>	1:500-1:2000
<b>IHC</b>	1:100-1:300
<b>ELISA</b>	1:20000

### Data



Western Blot analysis of A431 cells using SLC25A12 Polyclonal Antibody at dilution of 1:1000.  
**Observed Mw:75kDa**  
**Calculated Mw:75kDa**

### Preparation & Storage

**Storage** Store at -20°C. Avoid freeze / thaw cycles.

### Background

Calcium-dependent mitochondrial aspartate and glutamate carrier. May have a function in the urea cycle.

### For Research Use Only