

ARG2 Polyclonal Antibody

Catalog No. E-AB-30552

Note: Centrifuge before opening to ensure complete recovery of vial contents.

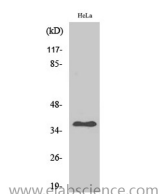
Description

Reactivity	Human
Immunogen	Synthesized peptide derived from the C-terminal region of human Arginase II
Host	Rabbit
Isotype	IgG
Purification	Affinity purification
Buffer	PBS with 0.02% sodium azide, 0.5% protective protein and 50% glycerol pH 7.4.

Applications Recommended Dilution

WB	1:500-1:2000
ELISA	1:5000

Data



Western Blot analysis of HeLa cells with ARG2
Polyclonal Antibody
Observed Mw:38kDa
Calculated Mw:39kDa

Preparation & Storage

Storage Store at -20°C. Avoid freeze / thaw cycles.

Background

May play a role in the regulation of extra-urea cycle arginine metabolism and also in down-regulation of nitric oxide synthesis. Extrahepatic arginase functions to regulate L-arginine bioavailability to NO synthase. Since NO synthase is found in the penil

For Research Use Only