

ARHGAP18 Polyclonal Antibody

Catalog No. E-AB-30553

Note: Centrifuge before opening to ensure complete recovery of vial contents.

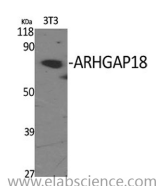
Description

Reactivity	Human
Immunogen	Synthesized peptide derived from the C-terminal region of human ARHGAP18
Host	Rabbit
Isotype	IgG
Purification	Affinity purification
Buffer	PBS with 0.02% sodium azide, 0.5% protective protein and 50% glycerol pH 7.4.

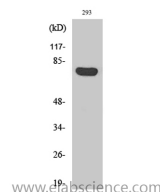
Applications Recommended Dilution

WB	1:500-1:2000
IHC	1:100-1:300
ELISA	1:40000

Data



Western Blot analysis of 3T3 cells with ARHGAP18 Polyclonal Antibody.
Observed Mw:75kDa
Calculated Mw:75kDa



Western Blot analysis of 293 cells with ARHGAP18 Polyclonal Antibody.

Preparation & Storage

Storage Store at -20°C. Avoid freeze / thaw cycles.

Background

GTPase activator for the Rho-type GTPases by converting them to an inactive GDP-bound state.

For Research Use Only